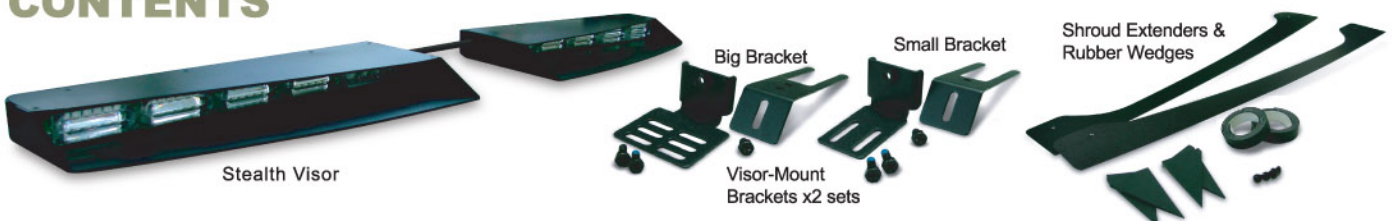
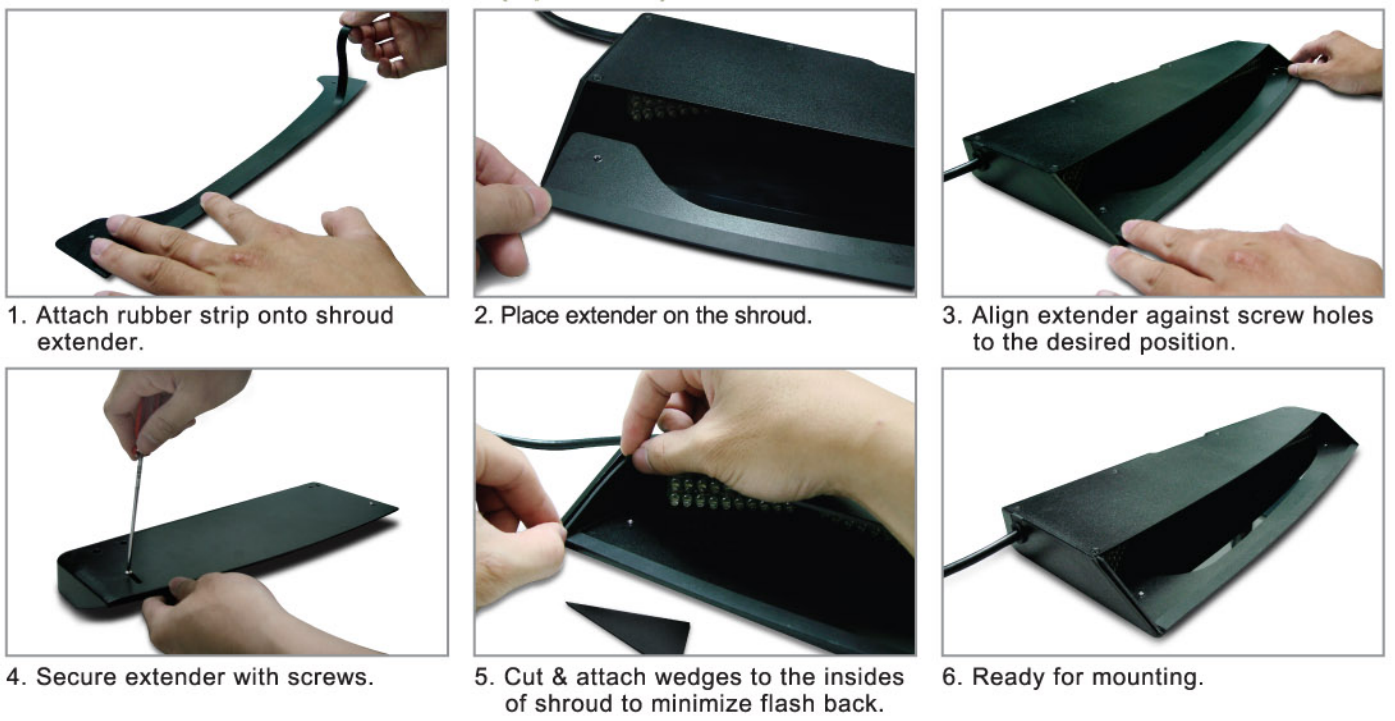


## CONTENTS



## SHROUD EXTENDER (optional)



**NOTE:** When Extenders are not used, attach rubber strips directly to the Stealth Visor shroud.

## MOUNTING



## STEALTH VISOR CIGAR-PLUG series



**WARNING MODE button**  
Activates all heads into warning mode.

**FLASH PATTERN button**  
To change flash pattern, press:  
· Once for next pattern  
· Quickly 3 times for reset to FP#0

**TAKE DOWN button**  
Enables steady burn for inner heads.

**Note:** This unit is not factory set at FP#0

FP#	WARNING MODE PATTERNS		
0	Kit Scan	13	Single H/L (split)
1	Outside-In Single	14	Single (all)
2	Outside-In Ultra	15	Double (all)
3	Side-by-Side Single	16	Quad (all)
4	Side-by-Side Ultra	17	Quint (all)
5	Random	18	Mega (all)
6	Single (Split)	19	Ultra (all)
7	Double (Split)	20	Single-Quad (all)
8	Quad (Split)	21	Single H/L (all)
9	Quint (Split)	22	Steady 2 (california)
10	Mega (Split)	23	Steady (all)
11	Ultra (Split)	24	Left Chaser
12	Single-Quad (Split)	25	Right Chaser

\*(split)=side by side alternating \*(all)=all LEDs on

## STEALTH VISOR HARD WIRE series

**RED:** Positive (+)  
**BLACK:** Ground (-)  
**ORANGE:** to +VDC for Take Downs  
**BLUE:** to +VDC for California Steady  
**BROWN:** to +VDC for Warning Patterns  
**YELLOW:** for Pattern Change (refer to Flash Patterns)  
**GREEN:** to +VDC for Low Power  
**WHITE:** to +VDC for alternate Head Grouping (heads that flash together will change)



**FLASH PATTERNS**  
Momentarily apply +VDC to **YELLOW** wire:  
· Once for next pattern  
· Quickly 3 times for reset to FP#0

To enable Take Down pattern change, activate Low Power (**GREEN** wire).

FP#	WARNING PATTERNS		
0	Kit Scan	13	Single H/L (split)
1	Outside-In Single	14	Single (all)
2	Outside-In Ultra	15	Double (all)
3	Side-by-Side Single	16	Quad (all)
4	Side-by-Side Ultra	17	Quint (all)
5	Random	18	Mega (all)
6	Single (Split)	19	Ultra (all)
7	Double (Split)	20	Single-Quad (all)
8	Quad (Split)	21	Single H/L (all)
9	Quint (Split)	22	Steady 2 (california)
10	Mega (Split)	23	Steady (all)
11	Ultra (Split)	24	Left Chaser
12	Single-Quad (Split)	25	Right Chaser

FP#	TAKE DOWN PATTERNS
0	Random
1	Single (split)
2	Quad (split)
3	Mega (split)
4	Ultra (split)
5	Single-Quad (split)
6	Single (all)
7	Quad (all)
8	Ultra (all)
9	Single-Quad (all)
10	**In-Sync-Mode

**\*\*In-Sync-Mode:** Take Down heads will sync according to the warning pattern.

\*(split)=side by side alternating \*(all)=all LEDs on  
**Note:** This unit is not factory set at FP#0