

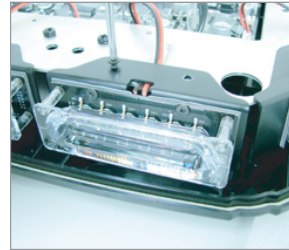
FALCON™ SERVICE MANUAL



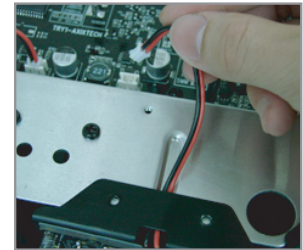
1. Detach Cover by removing 4 screws from bottom.



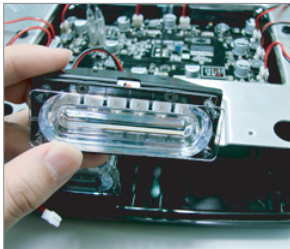
2. Detach Shield by removing 2 screws from top.



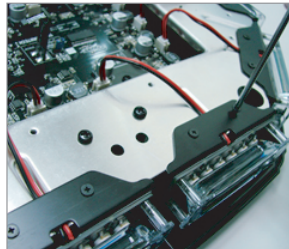
3. Loose Lighthouse by removing 2 screws on bracket.



4. Unplug Connector from main PCB & remove Lighthouse.



5. Place new Lighthouse in original position.



6. Secure Lighthouse bracket with 2 screws.



7. Secure Shield with 2 screws.



8. Secure Cover with 4 screws from bottom.