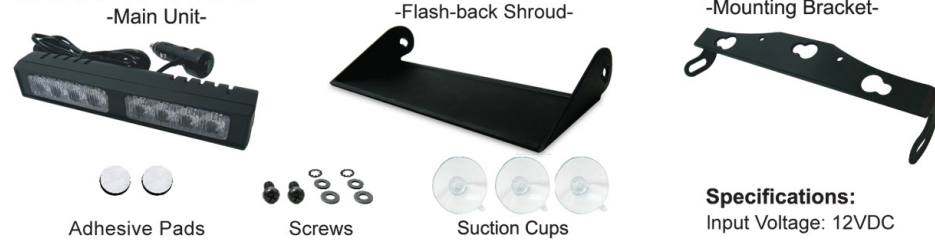


LED DASH LIGHT USER MANUAL

CONTENTS



ASSEMBLY



OPERATING GUIDE

MICROMAX-II and HAWK-II have different flash patterns. Refer to the following chart according to the purchased dash light model.

PUSH BUTTON

- push once for next flash pattern
- push quickly 3 times for reset to FP# 0

NOTE: This unit is NOT factory set at FP# 0

FP#	Flash Pattern for MICROMAX-II	
0	Kit Scan	13 Single H/L (split)
1	Outside-In Single	14 Single (all)
2	Outside-In Ultra	15 Double (all)
3	Side-by-Side Single	16 Quad (all)
4	Side-by-Side Ultra	17 Quint (all)
5	Random	18 Mega (all)
6	Single (split)	19 Ultra (all)
7	Double (split)	20 Single-Quad (all)
8	Quad (split)	21 Single H/L (all)
9	Quint (split)	22 Steady 2 (california)
10	Mega (split)	23 Steady 4 (all)
11	Ultra (split)	24 Left Chaser
12	Single-Quad (split)	25 Right Chaser

*SPLIT=side by side alternating *ALL=all LEDs on

FP#	Flash Pattern for HAWK-II	
0	Random (default)	10 Double (all)
1	Single (split)	11 Quad (all)
2	Double (split)	12 Quint (all)
3	Quad (split)	13 Mega (all)
4	Quint (split)	14 Ultra (all)
5	Mega (split)	15 Single-Quad (all)
6	Ultra (split)	16 Single H/L (all)
7	Single-Quad (split)	17 Steady 2 (california)
8	Single H/L (split)	18 Steady 4 (all)
9	Single (all)	

*SPLIT=side by side alternating *ALL=all LEDs on

WINDOW MOUNTING

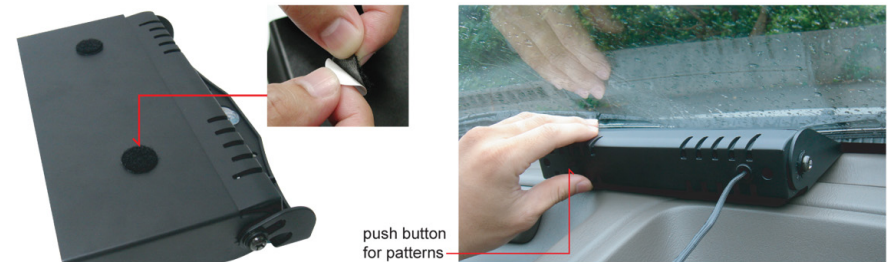
First, choose the windshield location for mounting. Clean the surface with alcohol to ensure a proper bond. Adjust Mounting Bracket & Flash-back Shroud, and press firmly against the windshield. Secure the dash light until the 3 suction cups have a firm hold. Once it's affixed to the windshield, the dash light is in operational mode.



NOTE: Due to various windshield angle, the Mounting Bracket and the Flash-back Shroud can be adjusted for optimum fit.

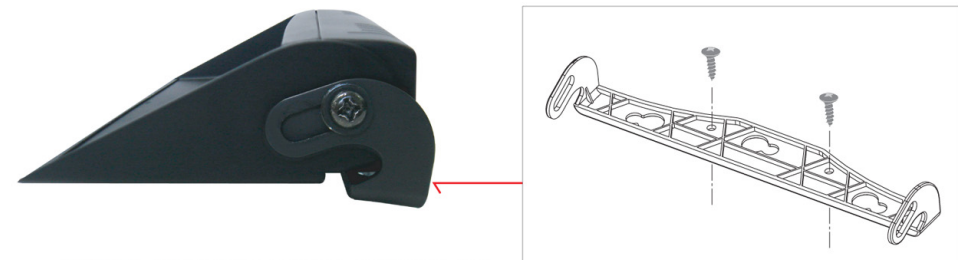
VELCRO MOUNTING

For best effect, clean the surface of the dash light and mounting surface with alcohol before applying Adhesive Pads.



OPTIONAL BRACKET MOUNTING

The standard bracket can be used to mount the dash light in a variety of locations on a flat surface.



NOTE: Mounting screws not included.