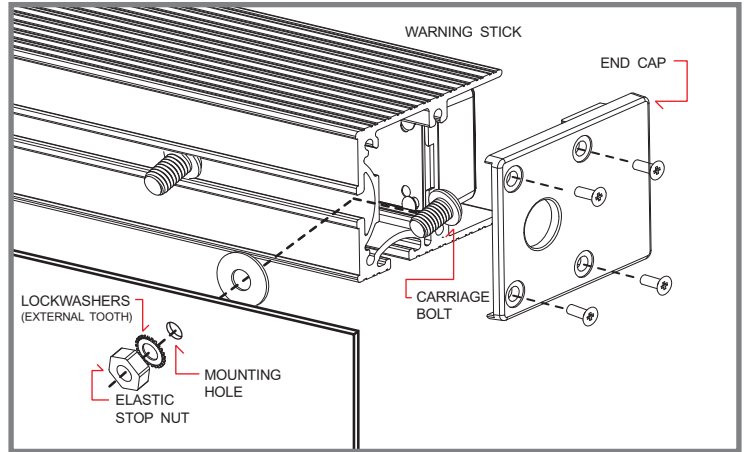


Dual Color

LED Warning / Traffic Stick Manual

INSTALLATION

1. Remove endcap (side without cable) and insert mounting carriage bolts.
2. For Surface Mount, drill 1/4" (6.3mm) holes to the mounting surface.
3. Place Disk Gasket onto each bolt, and insert bolts into mounting holes.
4. Place Lockwasher and Elastic Stop Nut onto each bolt, and tighten firmly.
5. For Bracket Mount (sold separately), refer to mounting bracket manuals.



POWER WIRING

RED: to +VDC (with fuse according to the following chart)

LIGHTHEAD TYPE	2 HEADS	4 HEADS	6 HEADS	8 HEADS	10 HEADS
3-LED Lighthead	3 Amps	3 Amps	5 Amps	5 Amps	10 Amps
4-LED Lighthead	3 Amps	5 Amps	5 Amps	10 Amps	10 Amps
6-LED Lighthead	3 Amps	5 Amps	10 Amps	10 Amps	15 Amps

BLACK: to Chassis Ground

CONTROL WIRING FOR WARNING STICKS

ORANGE: to +VDC for Color1 only
BLUE: to +VDC for Color2 only

ORANGE+BLUE: to +VDC for Color1 alternate Color2

BROWN: no function
GREEN: no function

WHITE: for Simultaneous or Alternating Flash (for multi-sticks only)

Group1: Sticks with **WHITE** connected to **RED** will flash together

Group2: Sticks with **WHITE** not connected to **RED** will flash together

*Group1 will alternate with Group2

YELLOW: for Synchronization & Flash Pattern Change (refer to Flash Patterns chart)

Connect **YELLOW** wires of all sticks together for synchronization

*All sticks must be set at the same pattern

Note: Some patterns are not be suitable for synchronization.

FP#	FLASH PATTERN	FP#	FLASH PATTERN	FP#	FLASH PATTERN
0	Kit Scan	9	Quint (split)	18	Mega (all)
1	Outside-In Single	10	Mega (split)	19	Ultra (all)
2	Outside-In Ultra	11	Ultra (split)	20	Single-Quad (all)
3	Side-by-Side Single	12	Single-Quad (split)	21	Single H/L (all)
4	Side-by-Side Ultra	13	Single H/L (split)	22	Steady 2 (california)
5	Random	14	Single (all)	23	Steady 4 (all)
6	Single (split)	15	Double (all)	24	Left Chaser
7	Double (split)	16	Quad (all)	25	Right Chaser
8	Quad (split)	17	Quint (all)		

Momentarily apply +VDC to **YELLOW** wire:

- Once for next pattern
- Quickly 3 times for reset to FP#0

Note: This unit may not be factory set at FP#0

The following FP# are not available in 2 Head Sticks:
 FP# 0, 1, 2, 3, 4, 24, 25

*(split)=side by side alternating *(all)=all LEDs on

CONTROL WIRING FOR TRAFFIC ARROW STICKS

ORANGE: to +VDC for Left Arrow

BLUE: to +VDC for Right Arrow

ORANGE+BLUE: to +VDC for Center Out

BROWN: to +VDC for Warning Patterns (Arrow Function wires must be deactivated).

GREEN: to +VDC for LED color switch (Color1 change to Color2)

YELLOW: for Pattern Change (refer to Flash Patterns chart)

WHITE: only used when connecting with SW610-TA switch (sold separately)

Note: The correct side up is facing the front of the stick with wiring coming out the right side.

FP#	ARROW PATTERNS (ORANGE/BLUE)	WARNING PATTERNS (BROWN)
0	Sweep Single	Random
1	Sweep Double	Outside-In Single
2	Sweep Triple	Outside-In Ultra
3	Sweep Single End x2	Side-by-Side Single
4	Solid	Side-by-Side Ultra
5	Solid End2	Kit Scan
6	Solid Chaser	Single (split)
7	Solid Fade	Ultra (split)
8	Blink Double	Single H/L (split)
9	Blink Triple	Single (all)
10	Blink Solid	Ultra (all)

*(split)=side by side alternating *(all)=all LEDs on

Momentarily apply +VDC

to **YELLOW** wire:

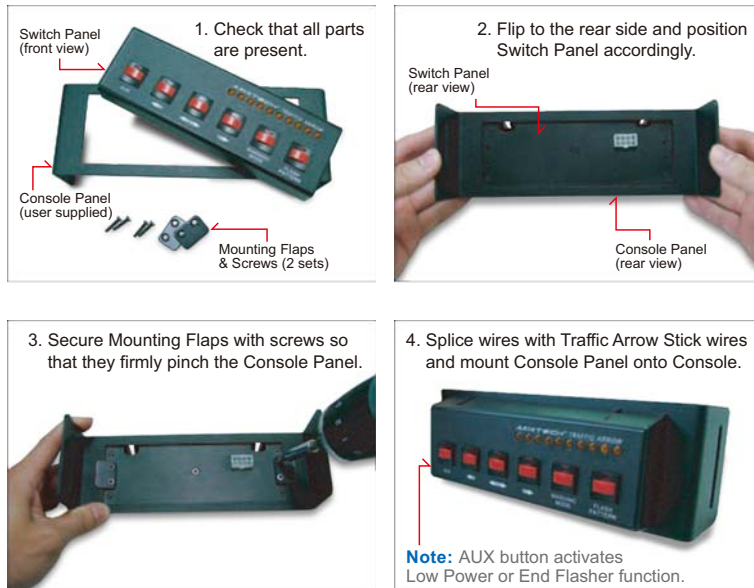
- Once for next pattern
- Quickly 3 times for reset to FP#0

Note: This unit may not be factory set at FP#0

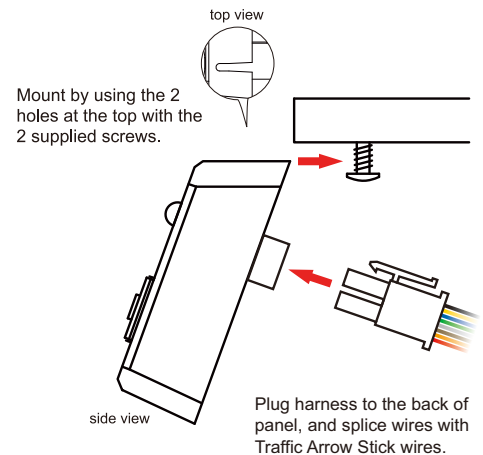
CONNECTION TO SW610-TA SWITCH PANEL (sold separately)

1. Choose a place to install the Switch Panel.
2. Route Switch Panel **RED** & **BLACK** wires toward vehicle battery.
3. Route Traffic Arrow Stick wires to Switch Panel and splice same color wires together.

Console Mount Installation



Screw Mount Installation



Note: do not splice **RED** and **BLACK** wires with Traffic Arrow Stick wires. They must be connected to +VDC and ground.